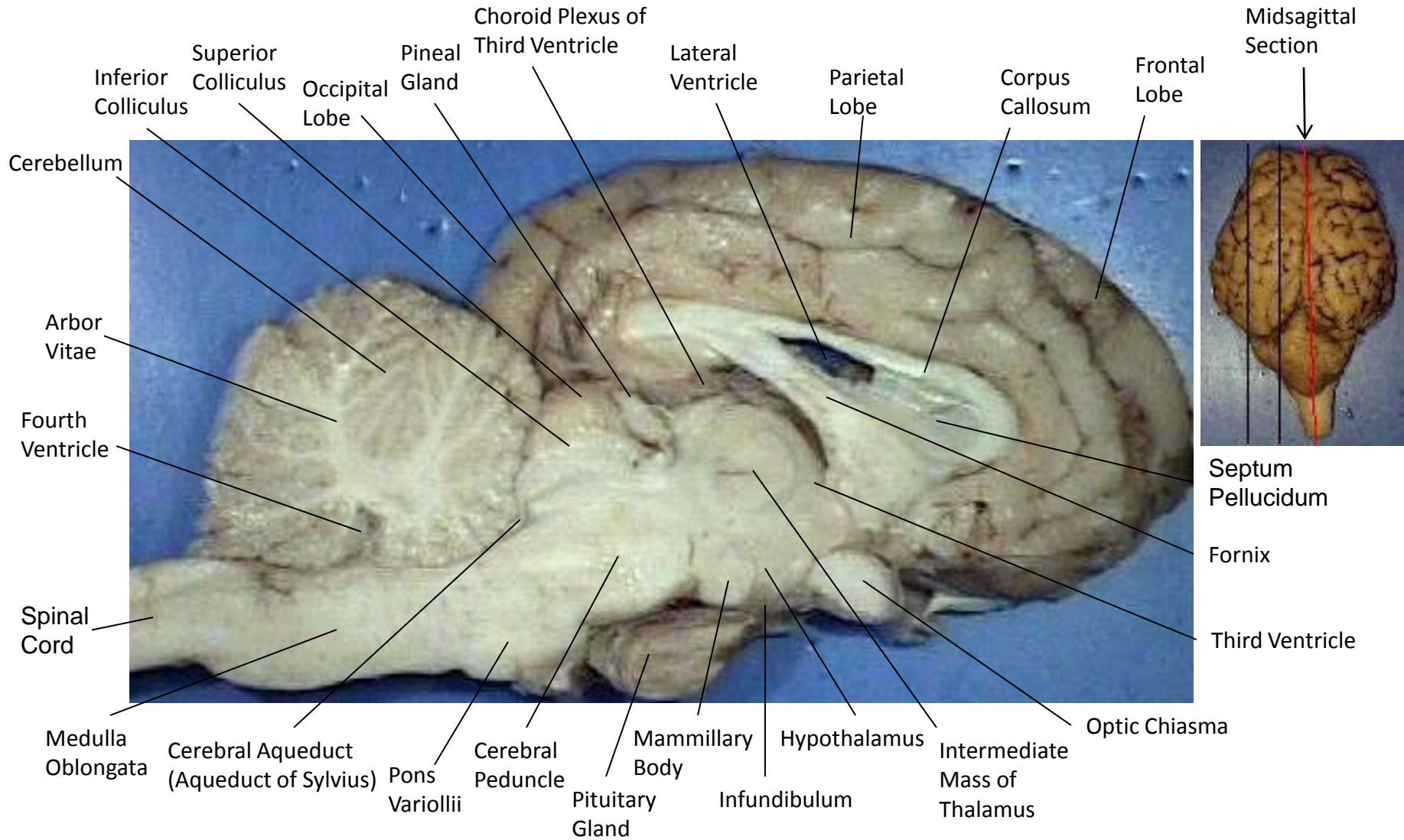
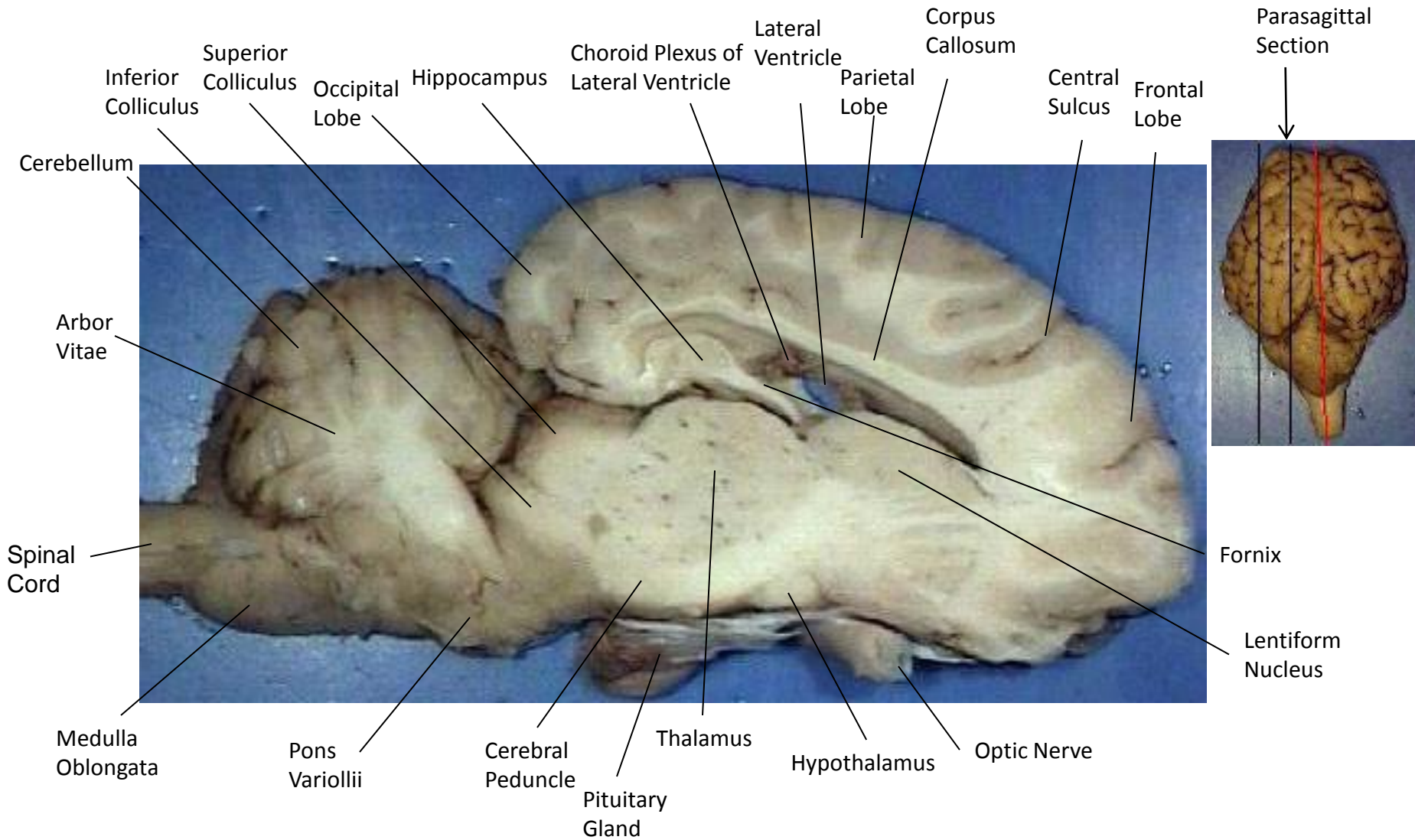


Sheep Brain – Midsagittal Section

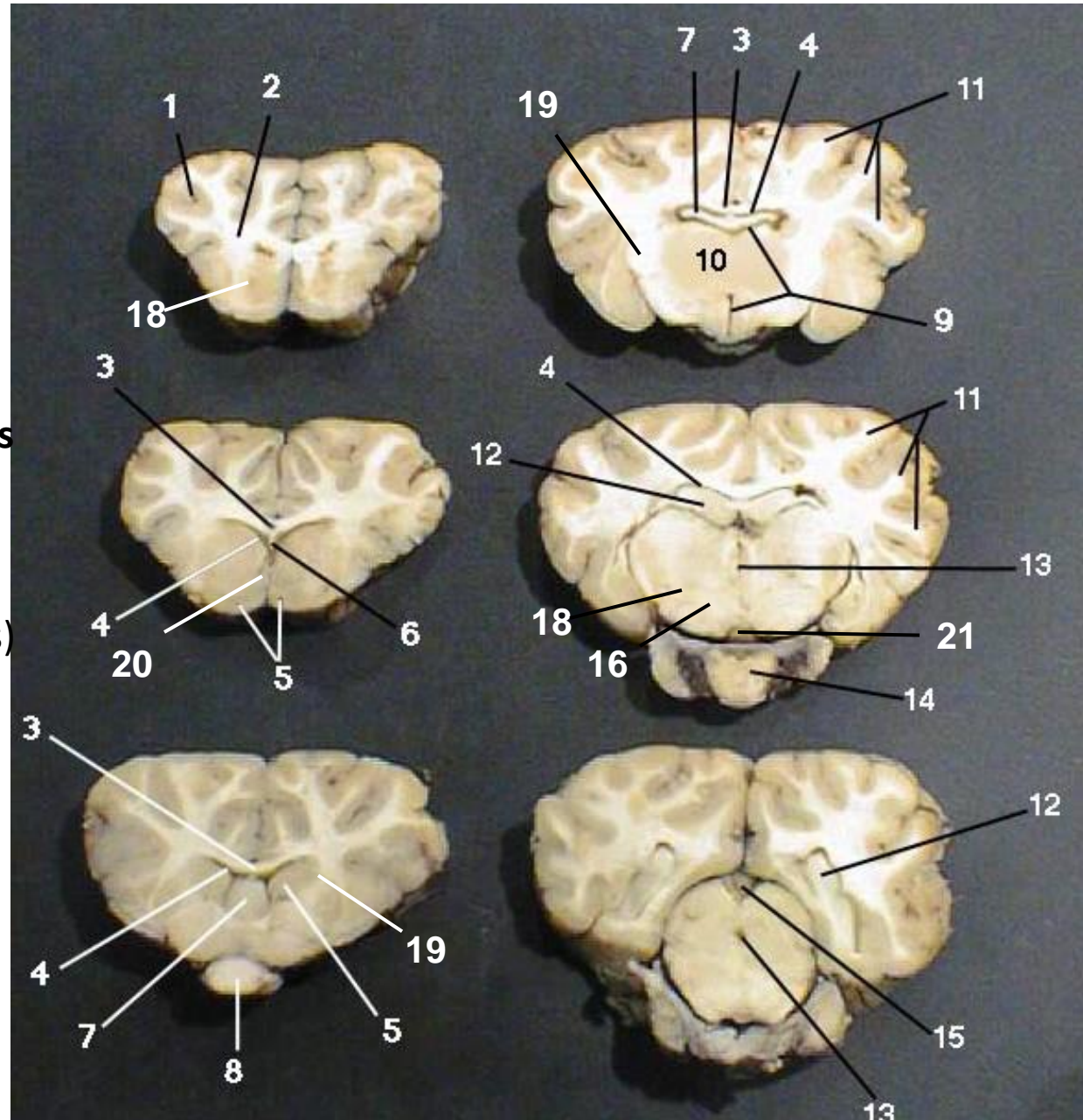


Sheep Brain – Parasagittal Section



Sheep Brain Frontal Section

1. Gray Matter
2. White Matter
3. Corpus Callosum
4. Lateral Ventricle
5. Caudate Nucleus
6. Septum Pellucidum
7. Fornix
8. Optic Chiasma
9. Third Ventricle
10. Thalamus (**Ovid Nuclear Mass** of Thalamus)
11. Corona Radiata
12. Hippocampus
13. Cerebral Aqueduct (of Sylvius)
14. Pituitary Gland (hypophysis)
15. Pineal Gland
16. Globus Pallidus Nucleus
17. Lentiform Nucleus
18. Putamen Nucleus
19. Internal Capsule
20. Intermediate Mass (of Thalamus)
21. Mammillary Body



Note: Together the globus pallidus and putamen are referred to as the lentiform nucleus

1. Gray Matter
2. White Matter
3. Corpus Callosum
4. Lateral Ventricle
5. Caudate Nucleus
6. Septum Pellucidum
7. Fornix
8. Optic Chiasma
9. Third Ventricle
10. Thalamus
11. Corona Radiata
12. Hippocampus
13. Cerebral Aqueduct
14. Pituitary Gland (hypophysis)
15. Pineal Gland
16. Globus Pallidus Nucleus
17. Transverse sinus within the Tentorium Cerebelli
18. Putamen Nucleus
19. Internal Capsule
20. Intermediate Mass
21. Mammillary Body
22. External Capsule
23. Hypothalamus
24. Vermis
25. Septohypothalamic Tract

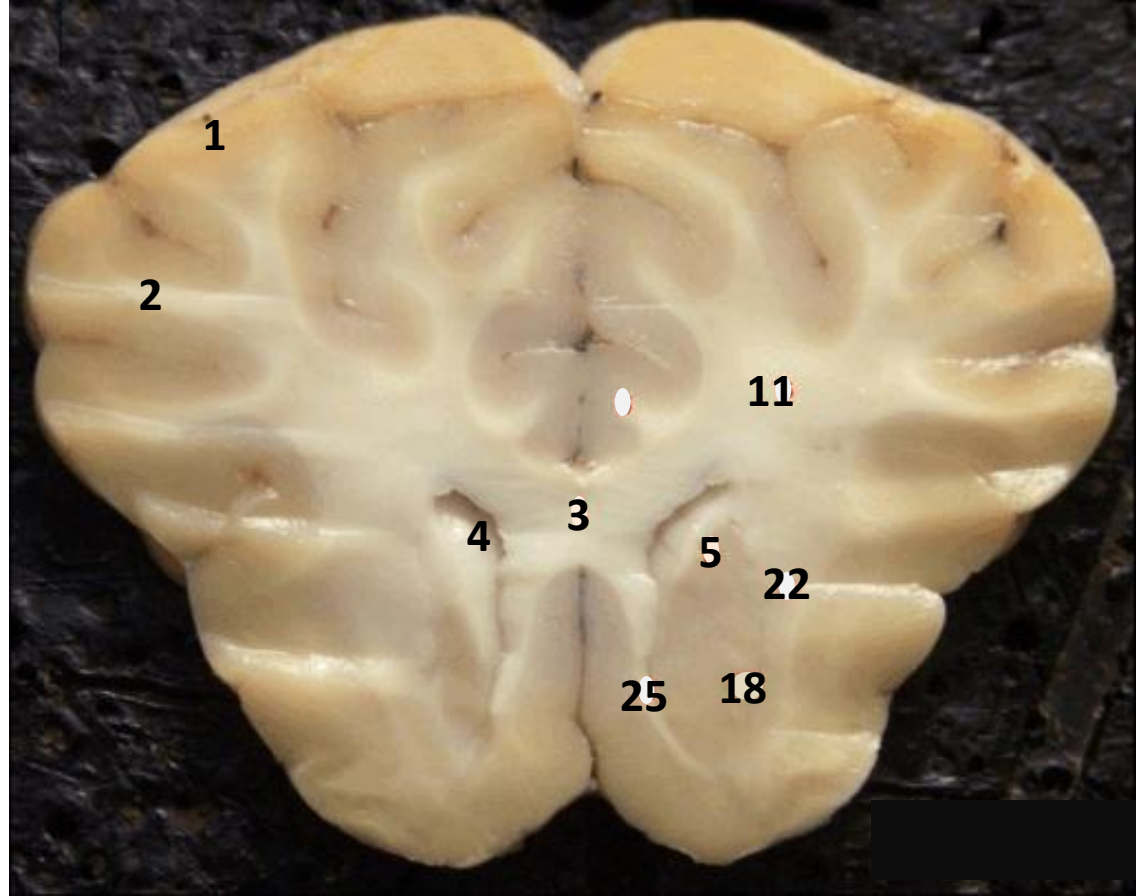


Plate 1

Note: Together the globus pallidus and putamen are referred to as the lentiform nucleus

SC Superior Colliculi

OT Optic Tract

SG Superior Sagittal Sinus within Falx Cerebri

1. Gray Matter
2. White Matter
3. Corpus Callosum
4. Lateral Ventricle
5. Caudate Nucleus
6. Septum Pellucidum
7. Fornix
8. Optic Chiasma
9. Third Ventricle
10. Thalamus
11. Corona Radiata
12. Hippocampus
13. Cerebral Aqueduct
14. Pituitary Gland (hypophysis)
15. Pineal Gland
16. Globus Pallidus Nucleus
17. Transverse sinus within the Tentorium Cerebelli
18. Putamen Nucleus
19. Internal Capsule
20. Intermediate Mass
21. Mammillary Body
22. External Capsule
23. Hypothalamus
24. Vermis
25. Septohypothalamic Tract

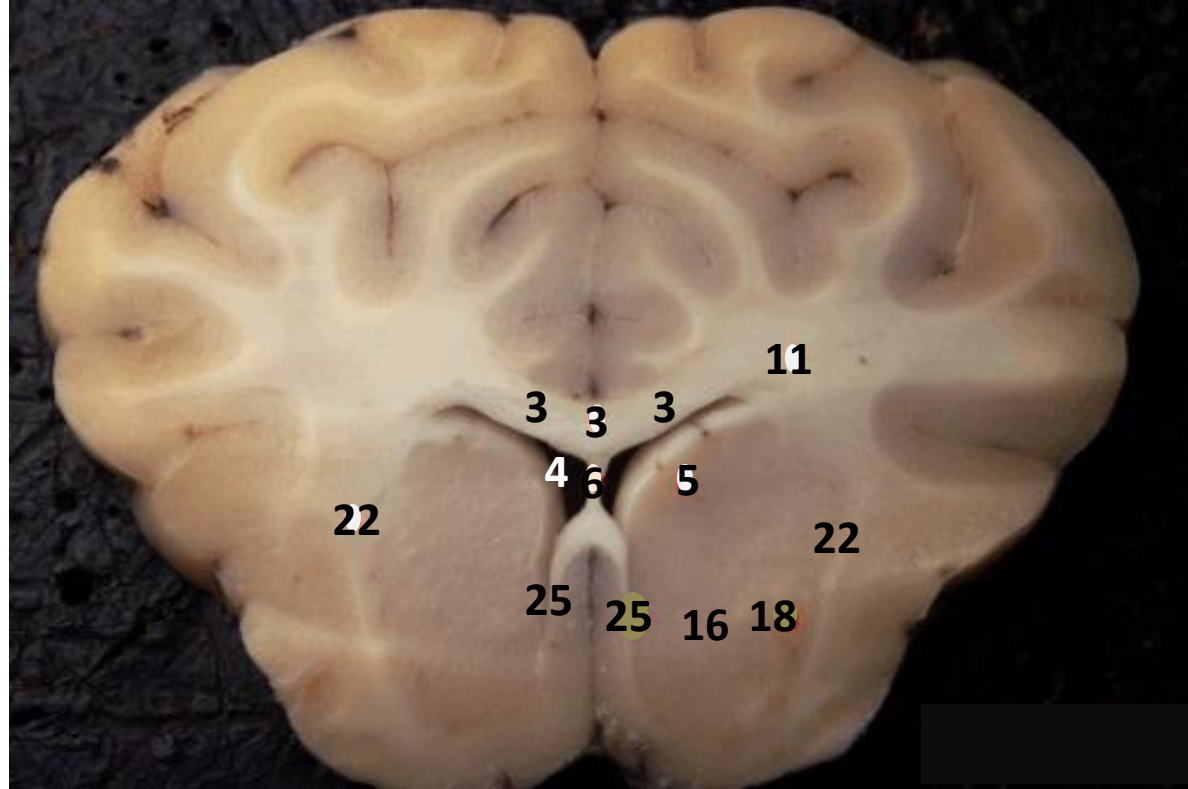


Plate 2

Note: Together the globus pallidus and putamen are referred to as the lentiform nucleus

SC Superior Colliculi

OT Optic Tract

SG Superior Sagittal Sinus within Falx Cerebri

1. Gray Matter
2. White Matter
3. Corpus Callosum
4. Lateral Ventricle
5. Caudate Nucleus
6. Septum Pellucidum
7. Fornix
8. Optic Chiasma
9. Third Ventricle
10. Thalamus
11. Corona Radiata
12. Hippocampus
13. Cerebral Aqueduct
14. Pituitary Gland (hypophysis)
15. Pineal Gland
16. Globus Pallidus Nucleus
17. Transverse sinus within the Tentorium Cerebelli
18. Putamen Nucleus
19. Internal Capsule
20. Intermediate Mass
21. Mammillary Body
22. External Capsule
23. Hypothalamus
24. Vermis
25. Septohypothalamic Tract

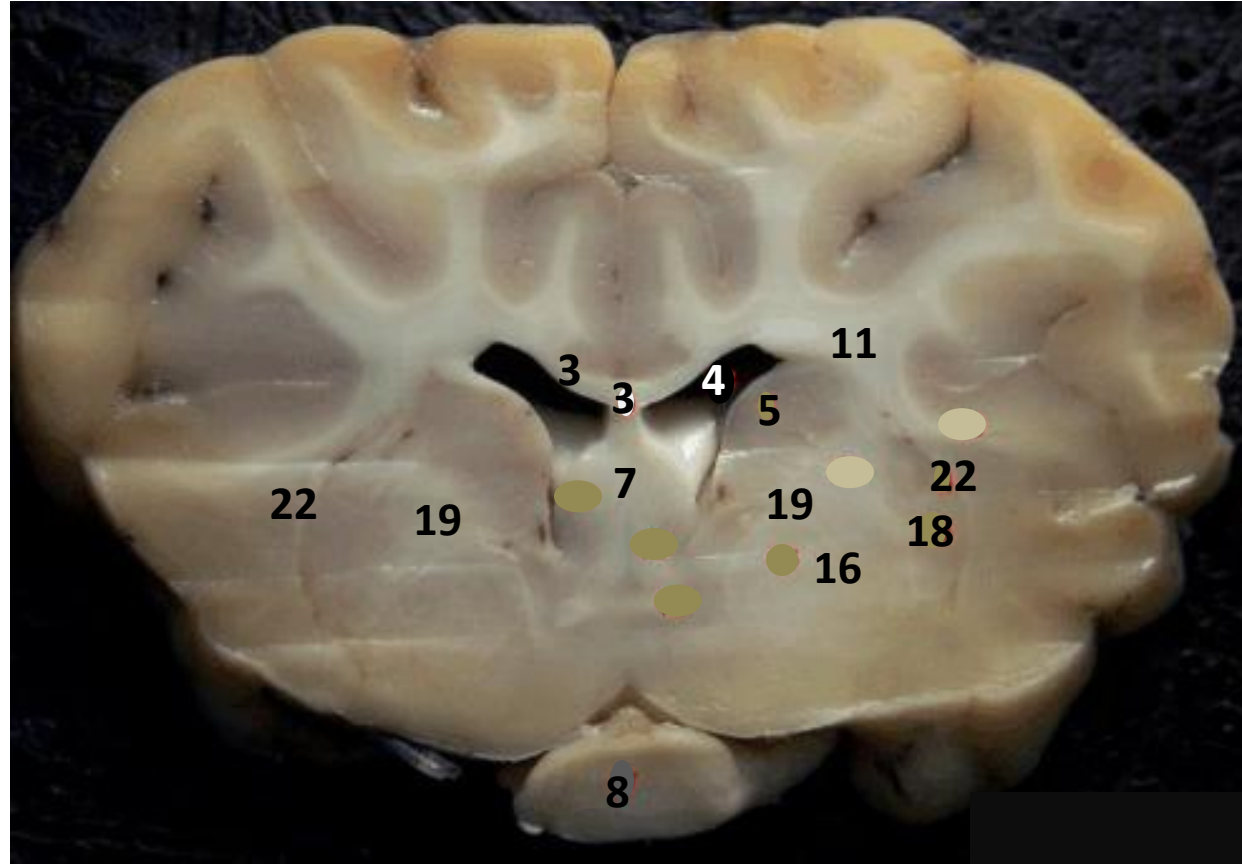


Plate 3

Note: Together the globus pallidus and putamen are referred to as the lentiform nucleus

SC Superior Colliculi

OT Optic Tract

SG Superior Sagittal Sinus within Falx Cerebri

1. Gray Matter
2. White Matter
3. Corpus Callosum
4. Lateral Ventricle
5. Caudate Nucleus
6. Septum Pellucidum
7. Fornix
8. Optic Chiasma
9. Third Ventricle
10. Thalamus
11. Corona Radiata
12. Hippocampus
13. Cerebral Aqueduct
14. Pituitary Gland (hypophysis)
15. Pineal Gland
16. Globus Pallidus Nucleus
17. Transverse sinus within the Tentorium Cerebelli
18. Putamen Nucleus
19. Internal Capsule
20. Intermediate Mass
21. Mammillary Body
22. External Capsule
23. Hypothalamus
24. Vermis
25. Septohypothalamic Tract

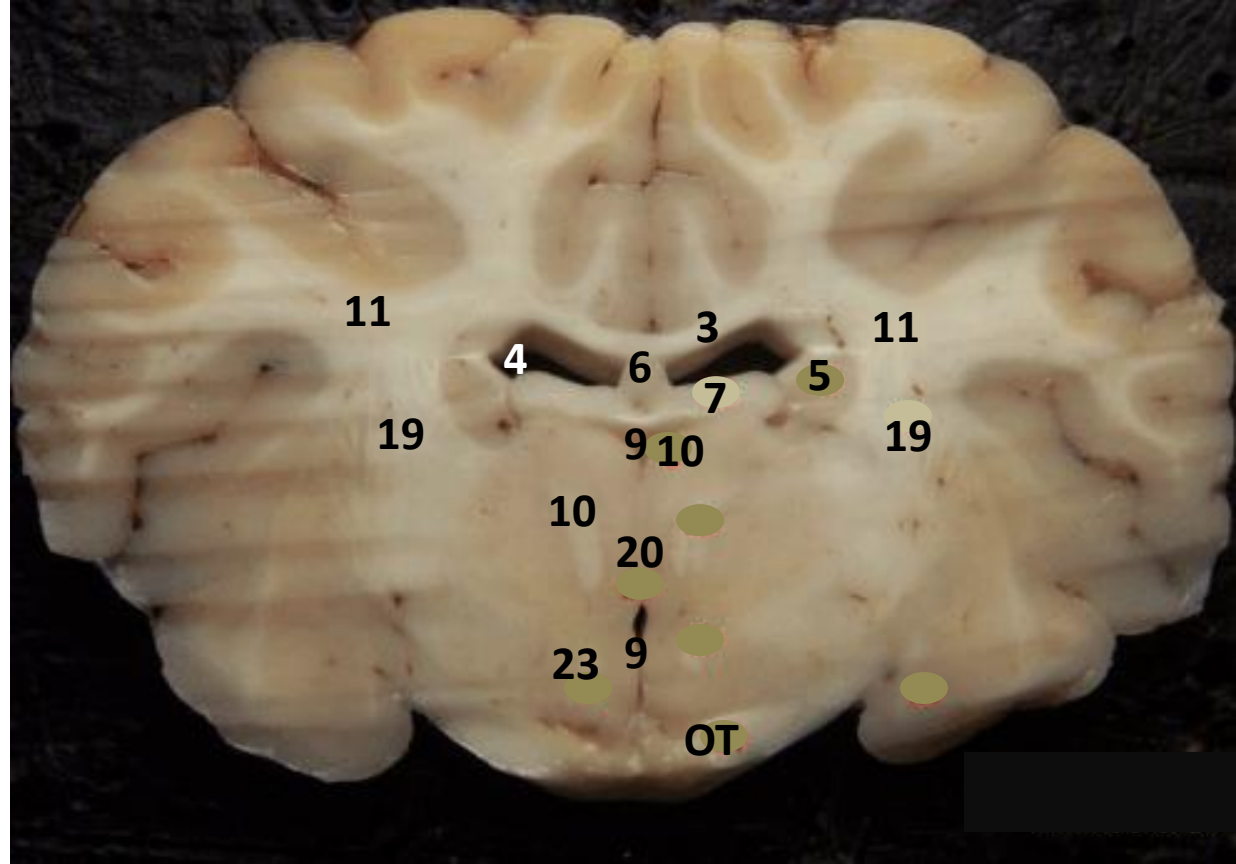


Plate 4

Note: Together the globus pallidus and putamen are referred to as the lentiform nucleus

SC Superior Colliculi

OT Optic Tract

SG Superior Sagittal Sinus within Falx Cerebri

1. Gray Matter
2. White Matter
3. Corpus Callosum
4. Lateral Ventricle
5. Caudate Nucleus
6. Septum Pellucidum
7. Fornix
8. Optic Chiasma
9. Third Ventricle
10. Thalamus
11. Corona Radiata
12. Hippocampus
13. Cerebral Aqueduct
14. Pituitary Gland (hypophysis)
15. Pineal Gland
16. Globus Pallidus Nucleus
17. Transverse sinus within the Tentorium Cerebelli
18. Putamen Nucleus
19. Internal Capsule
20. Intermediate Mass
21. Mammillary Body
22. External Capsule
23. Hypothalamus
24. Vermis
25. Septohypothalamic Tract

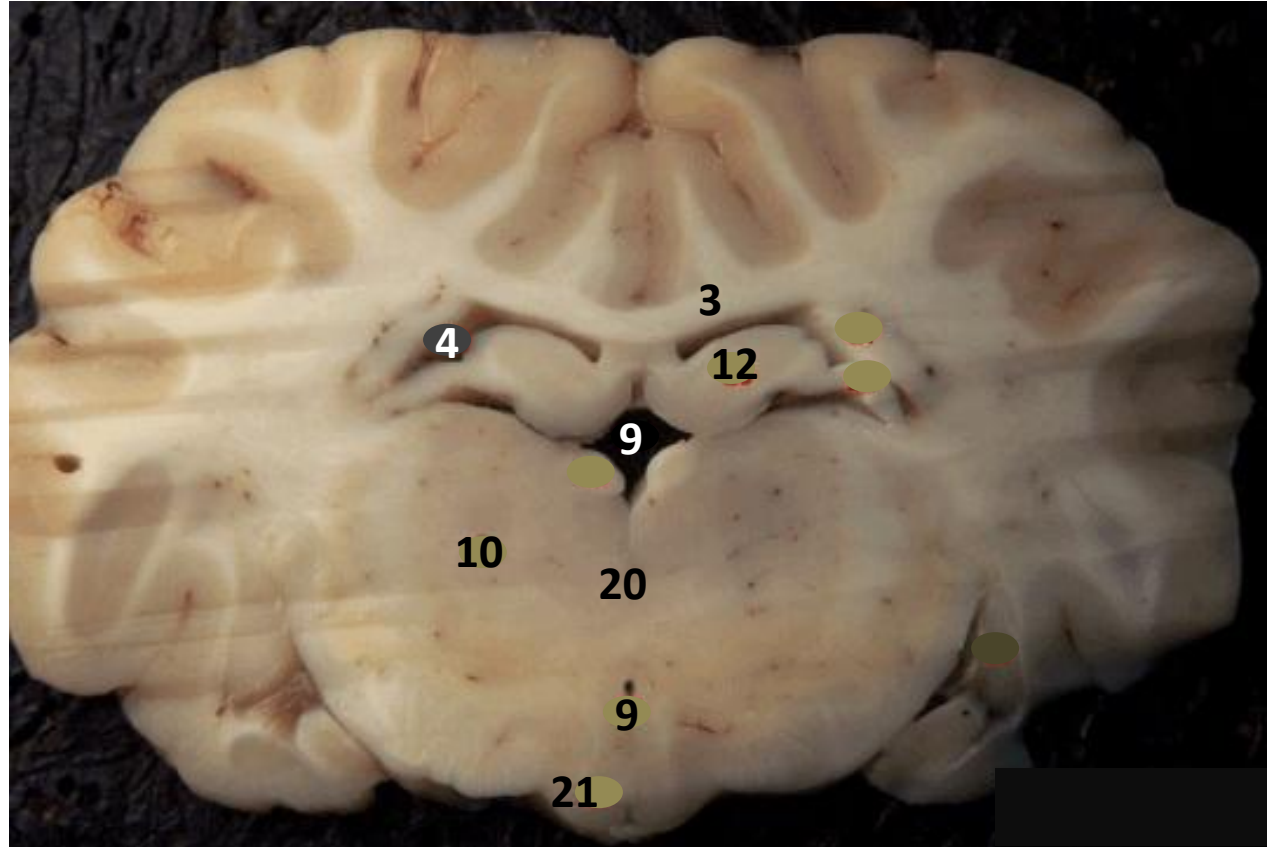


Plate 5

Note: Together the globus pallidus and putamen are referred to as the lentiform nucleus

SC Superior Colliculi

OT Optic Tract

SG Superior Sagittal Sinus within Falx Cerebri

1. Gray Matter
2. White Matter
3. Corpus Callosum
4. Lateral Ventricle
5. Caudate Nucleus
6. Septum Pellucidum
7. Fornix
8. Optic Chiasma
9. Third Ventricle
10. Thalamus
11. Corona Radiata
12. Hippocampus
13. Cerebral Aqueduct
14. Pituitary Gland (hypophysis)
15. Pineal Gland
16. Globus Pallidus Nucleus
17. Transverse sinus within the Tentorium Cerebelli
18. Putamen Nucleus
19. Internal Capsule
20. Intermediate Mass
21. Mammillary Body
22. External Capsule
23. Hypothalamus
24. Vermis
25. Septohypothalamic Tract

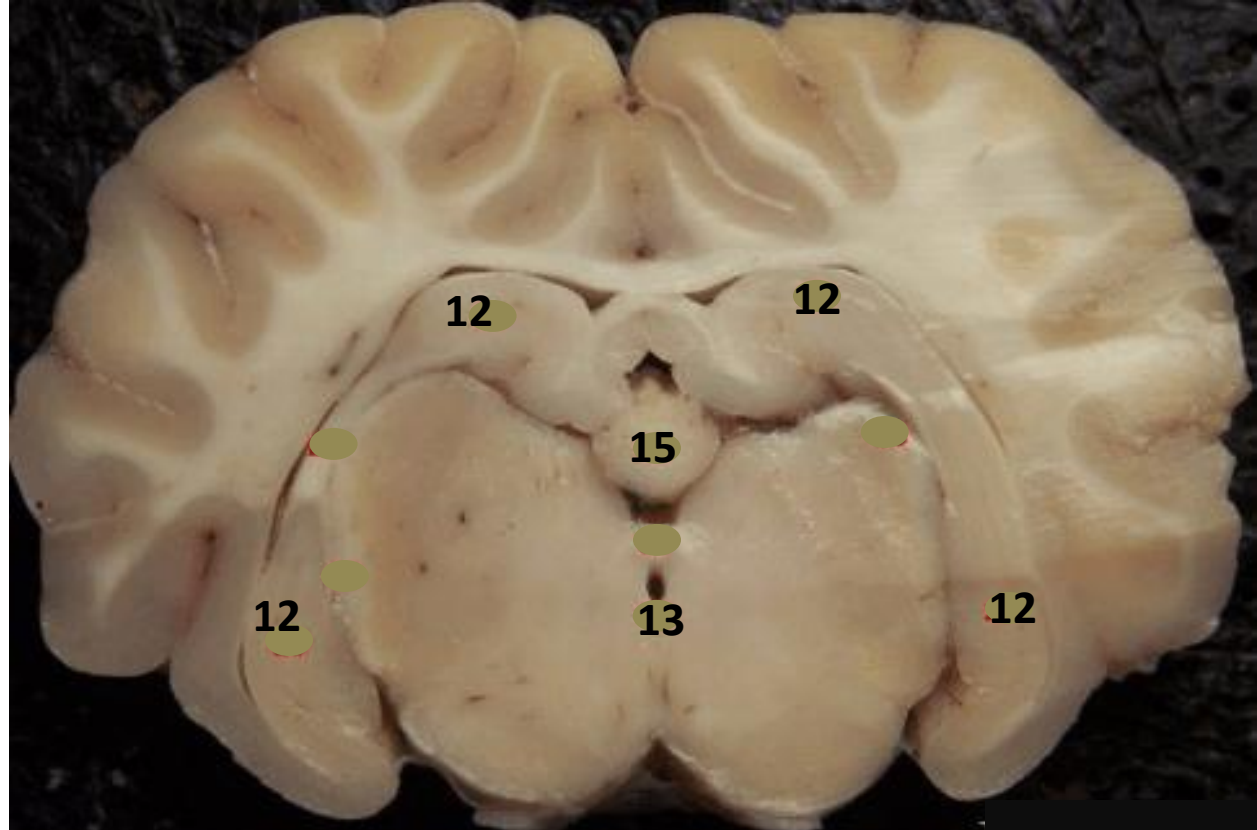


Plate 6

Note: Together the globus pallidus and putamen are referred to as the lentiform nucleus

SC Superior Colliculi

OT Optic Tract

SG Superior Sagittal Sinus within Falx Cerebri

1. Gray Matter
2. White Matter
3. Corpus Callosum
4. Lateral Ventricle
5. Caudate Nucleus
6. Septum Pellucidum
7. Fornix
8. Optic Chiasma
9. Third Ventricle
10. Thalamus
11. Corona Radiata
12. Hippocampus
13. Cerebral Aqueduct
14. Pituitary Gland (hypophysis)
15. Pineal Gland
16. Globus Pallidus Nucleus
17. Transverse sinus within the Tentorium Cerebelli
18. Putamen Nucleus
19. Internal Capsule
20. Intermediate Mass
21. Mammillary Body
22. External Capsule
23. Hypothalamus
24. Vermis
25. Septohypothalamic Tract



Plate 7

Note: Together the globus pallidus and putamen are referred to as the lentiform nucleus

SC Superior Colliculi

OT Optic Tract

SG Superior Sagittal Sinus within Falx Cerebri